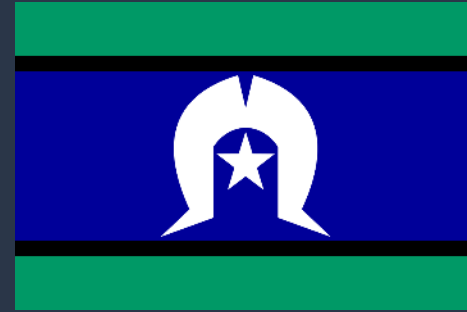


# Using data to support your Skilling Queenslanders for Work application

7<sup>th</sup> March 2024



**QCROSS acknowledges Aboriginal and Torres Strait Islander people as the original inhabitants of Australia and recognises these unique cultures as part of the cultural heritage of all Australians. We pay respect to the Elders of this land; past and present.**

## Contact us

Research@qcross.org.au



**Amy Dellit**

Data and Reporting Analyst  
QCOSS

Numbers

Percentages

Descriptive  
statistics

Evidence to use in  
your grant  
application!

1. The importance of an evidence-based funding proposal
2. Data sources
  - What is an open data source?
  - What is data quality?
  - Where to go for data
3. Using data
  - Choosing the right data to measure
  - Interpreting data
4. Using data in an example proposal

**Data helps you identify the problem and  
create an accurate theory for solving it**

- Provides evidence that there is need, and that you know specifically what the need is
- Shows you have a robust understanding of the specific target cohort
- Deepens the understand of the funder of the problem you're seeking to solve
- Can provide a baseline for evaluating your impact
- Ensures your organisation's understanding of the community and it's needs remains current

## Selection Criteria Two “Servicing community and industry needs”

- What the project will achieve, what the ongoing community benefits will be and what the level of need is for the particular project in the community
- How the project aligns to local labour market needs and employment trends – i.e. participation rates, unemployment rates, current vacancy rates, industry growth, etc. The department expects organisations to have researched their local labour market.

## Key Target Groups for SQW include:

- Young people (15-24 years), including those in and transitioned from out-of-home care
- Aboriginal and Torres Strait Islander people
- Mature age job seekers (45+ years)
- People from culturally and linguistically diverse backgrounds
- People with disability, including those with mental health, alcohol, and other drug issues
- Women re-entering the workforce
- Veterans, ex-Australian Defence Force (ADF) members and their families
- Recently released prisoners.

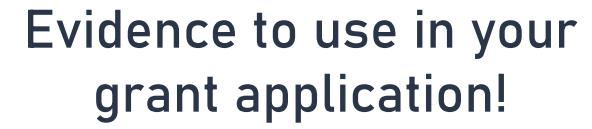


A community based organisation who primarily delivers services to young people in Roma has a good sense of what's going on for young people in their community and feel that delivering a Certificate I in Construction through the Work Skills Traineeships program would have value.

---

To evidence their project idea, they need to be able to articulate:

- That the demographic (15-24 years) are in the community
- There are young people who are not engaged in school or employment in the community
- That filling positions in the construction industry is a need in Roma

A white rounded rectangular box containing the text 'Evidence to use in your grant application!' in a dark, sans-serif font. The background of the slide is a dark blue network of glowing nodes and lines.A white rounded rectangular box containing the text 'Descriptive statistics' in a dark, sans-serif font.A white rounded rectangular box containing the text 'Percentages' in a dark, sans-serif font.A white rounded rectangular box containing the text 'Numbers' in a dark, sans-serif font.

Qualitative data is information to support and validate the numbers (quantitative data).

## It can include (examples):

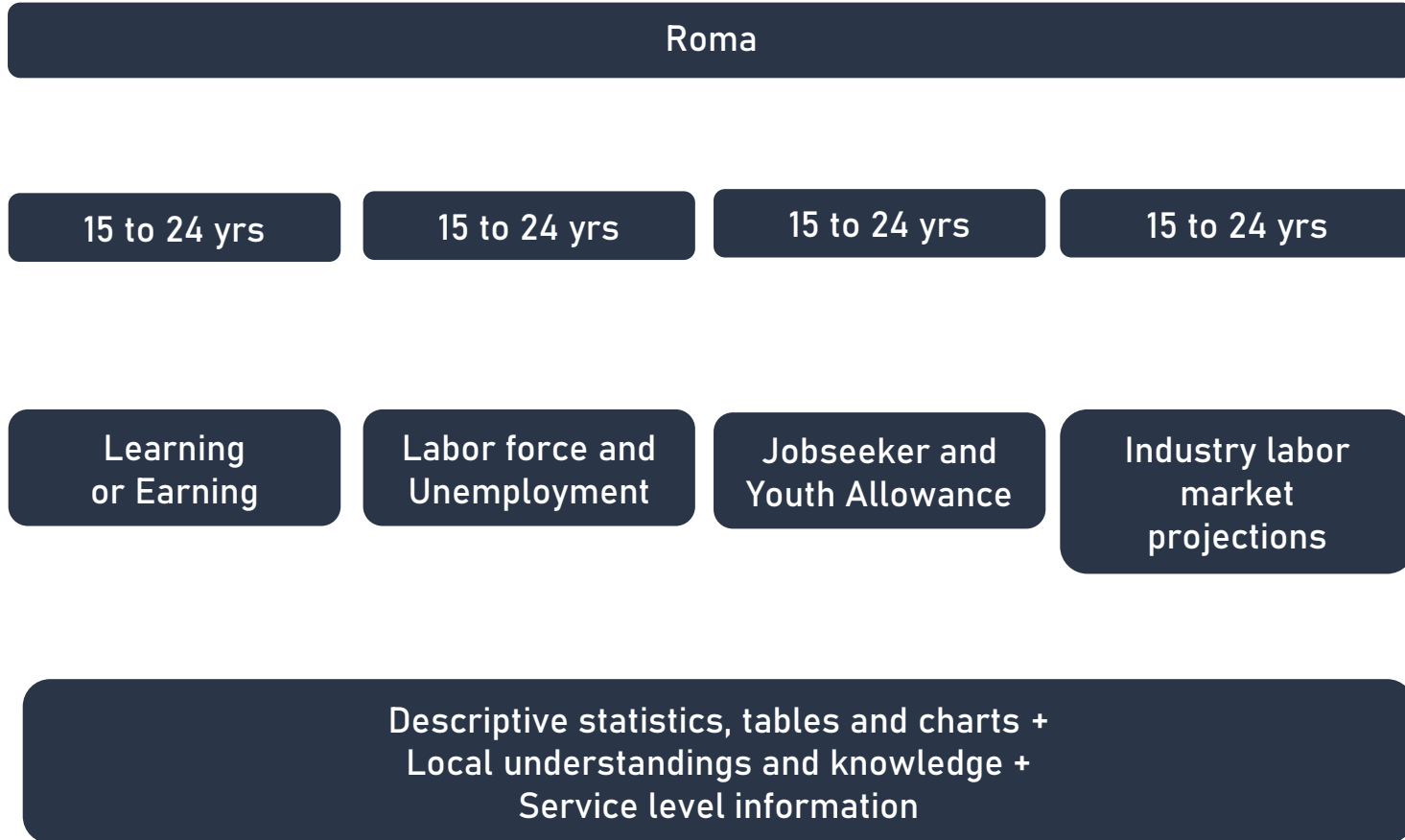
- Video
- Direct quotes
- Client stories
- Case studies
- Lived experience/expertise
- Client feedback
- Staff feedback
- Community feedback
- Narrative

## It can be captured through (examples):

- Observation
- Interviews
- Focus groups
- Yarns
- Case notes
- Client satisfaction surveys
- Online feedback forms
- Social media
- Community events
- Research
- Evaluation
- Continuous quality improvement activities
- Stakeholder and reference groups

Note: be sure that appropriate permission and consent is obtained before using this data

1. Understand your geography
2. Understand the population (your denominator)
3. Understand what you want to measure (your numerator)
4. Summarising the data in a succinct way



1. Understand your geography
2. Understand the population (your denominator)
3. Understand what you want to measure (your numerator)
4. Summarising the data in a succinct way

1. Understand your geography
2. Understand the population (your denominator)
3. Understand what you want to measure (your numerator)
4. Summarising the data in a succinct way

## Roma

Learning  
or Earning

Labor force and  
Unemployment

Jobseeker and  
Youth Allowance

Industry labor  
market projections

15 to 24 yrs

15 to 24 yrs

15 to 24 yrs

15 to 24 yrs

Descriptive statistics, tables and charts +  
Local understandings and knowledge +  
Service level information

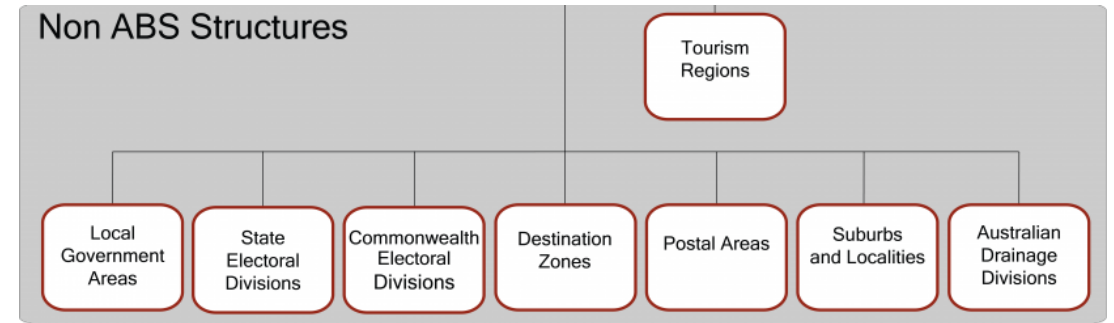
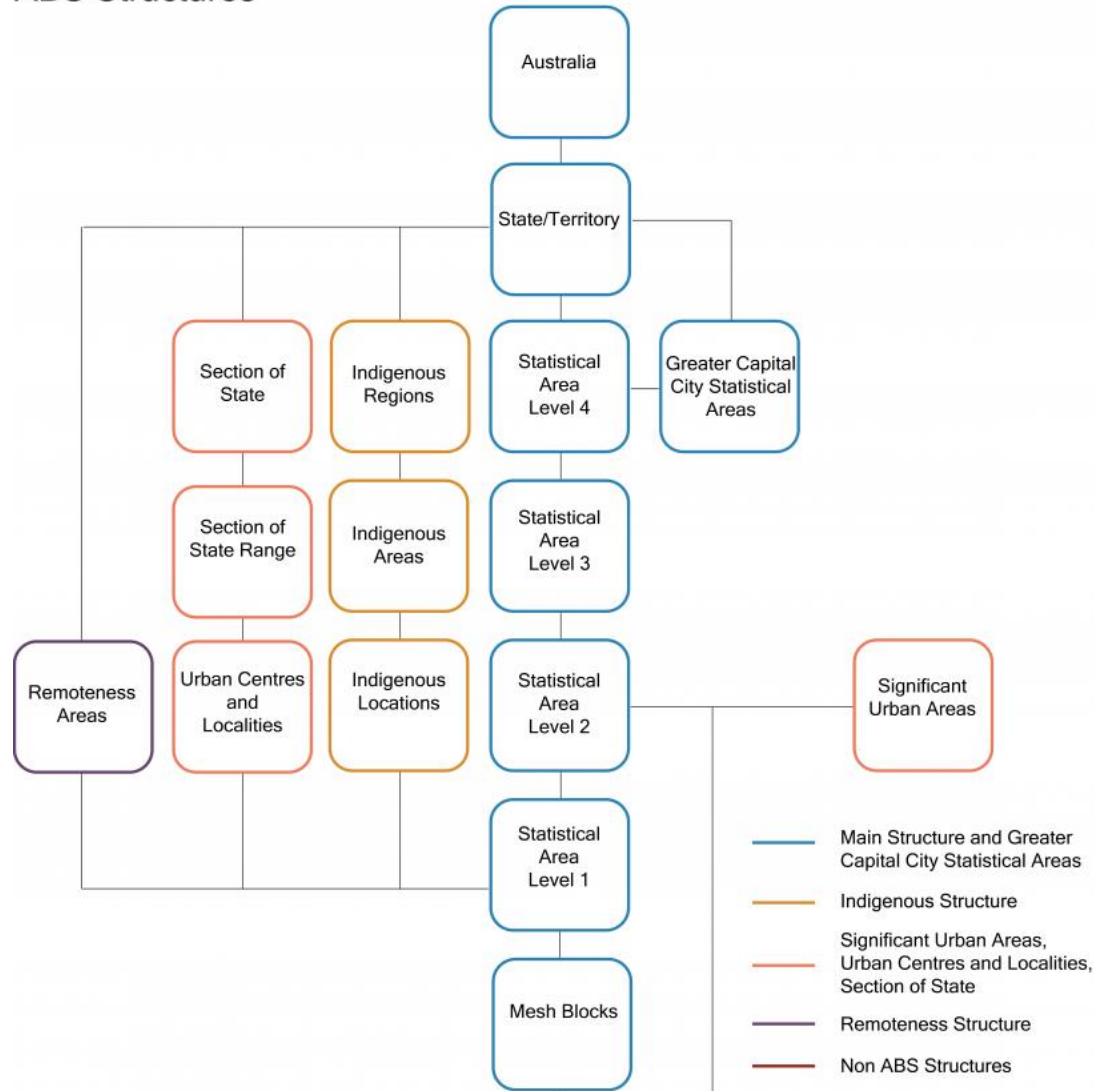
# Step 1: Understand your geography



## How to interpret the data for your community



## ABS Structures



## Community data to focus on:

- Statistical Area 2
- Statistical Area 3
- Statistical Area 4
- Local Government Area



# Step 1: Understand your geography

Local Government Areas



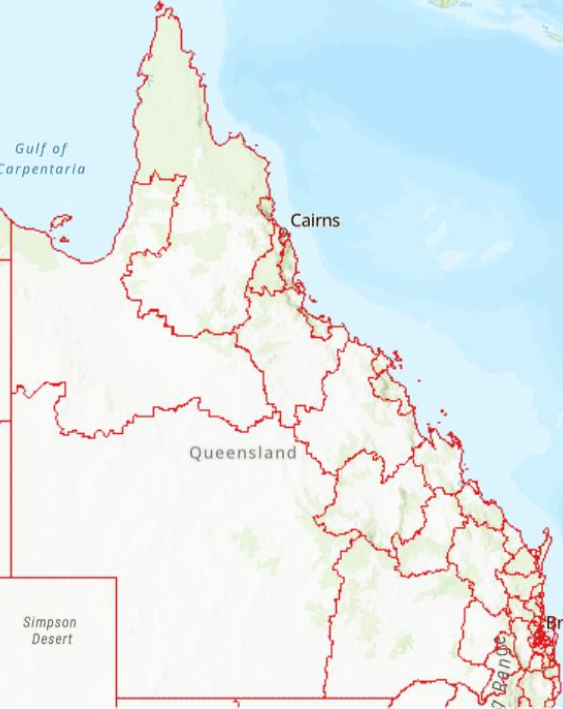
80

SA4s



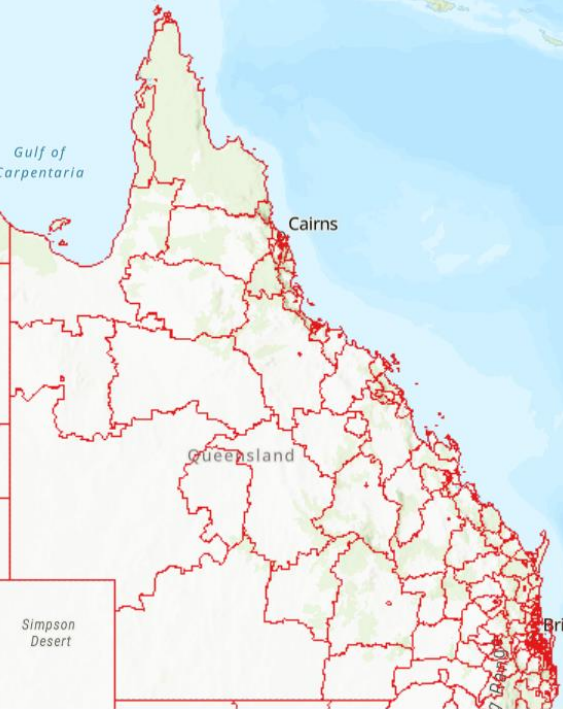
21

SA3s



84

SA2s



548

Australian Bureau of Statistics - <https://maps.abs.gov.au/index.html>

*ABS Maps*

Community data to focus on:

Local Government Area: Maranoa

Statistical Area 4 Name: Darling Downs – Maranoa

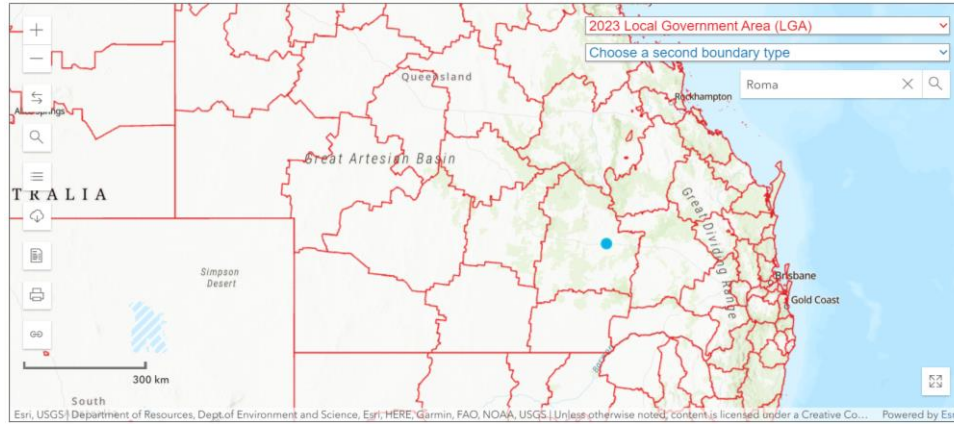
Statistical Area 3 Name: Darling Downs (West) – Maranoa

Statistical Area 2 Name: Roma

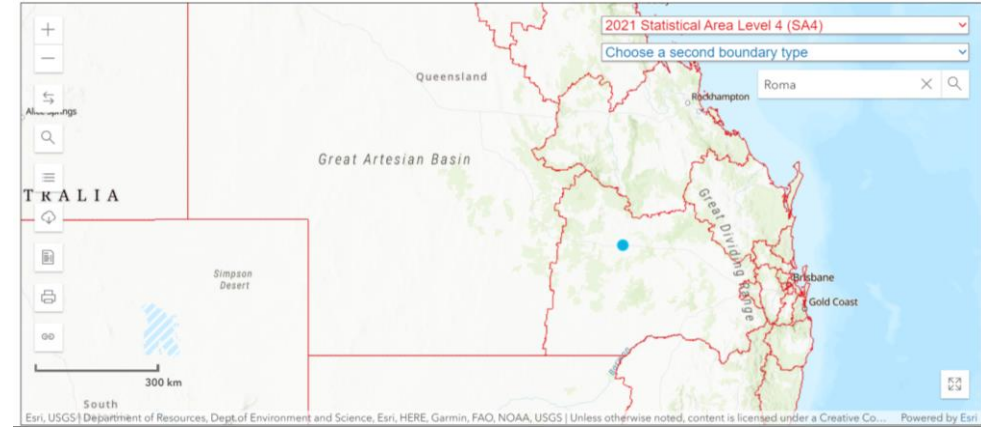
Remember: The geography size and area differs significantly. Sometimes the geography names are similar or the same, sometimes they are different.

It is important to get the geography right to collect and analyse the right data

## Local Government Area: Maranoa



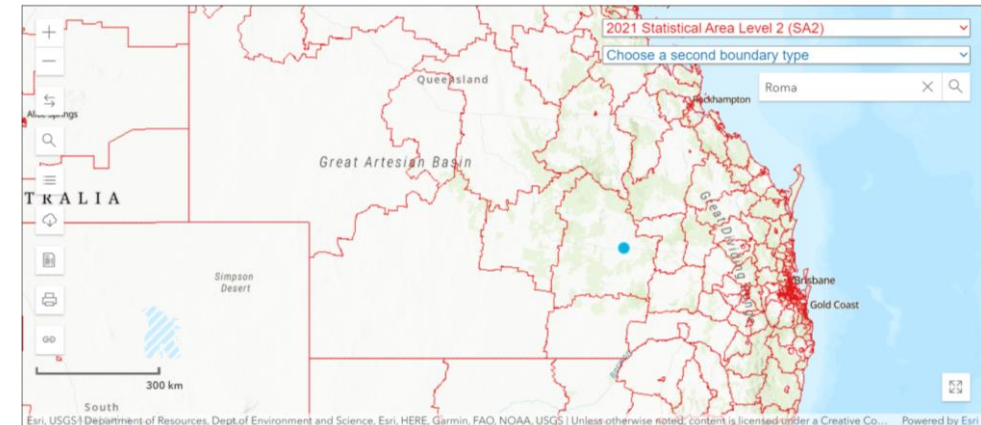
## SA4: Darling Downs - Maranoa



## SA3: Darling Downs (West) - Maranoa



## SA2: Roma



1. Understand your geography
2. Understand the population (your denominator)
3. Understand what you want to measure (your numerator)
4. Summarising the data in a succinct way

## Roma

Learning  
or Earning

Labor force and  
Unemployment

Jobseeker and  
Youth Allowance

Industry labor  
market projections

15 to 24 yrs

15 to 24 yrs

15 to 24 yrs

15 to 24 yrs

Descriptive statistics, tables and charts +  
Local understandings and knowledge +  
Service level information

# Step 2: Understand the population (your denominator)

## Most Relevant Open Data Sources

Data Source	Link to open data
1. Queensland Treasury	<a href="#"><u>Queensland Regional Profiles</u></a>
2. Queensland Treasury	<a href="#"><u>Know Your Community Profiles</u></a>
3. Australian Bureau of Statistics (ABS)	<a href="#"><u>2021 Census Community Profiles</u></a>
4. Australian Bureau of Statistics (ABS)	<a href="#"><u>2021 Census All persons QuickStats</u></a>
5. Torrens University Australia	<a href="#"><u>PHIDU</u></a>

## 2. Queensland Treasury - Queensland Regional Profiles

Data we needed	Data Source	Data found for LGA	Data found for SA4/SA3	Data found for QLD
Demographic in community (young people 15-24 years)	<u>Queensland Regional Profiles</u>	Maranoa 1,568 people aged 15-24 (12.0%) 13,100 persons all ages	Darling Downs – Maranoa (SA4) 14,326 people aged 15-24 (10.9%) 131,012 persons all ages Darling Downs (West) – Maranoa (SA3) 4,987 people aged 15-24 (11.1%) 44,963 persons all ages Darling Downs - East (SA3) 4,978 people aged 15-24 (11.4%) 43,702 persons all ages Granite Belt (SA3) 4,361 people aged 15-24 (10.3%) 42,347 persons all ages Roma (SA2) 1,007 people aged 15-24 (14.4%) 7,011 persons all ages Roma Surrounds (SA2) 561 people aged 15-24 (9.2%) 6,089 persons all ages	Queensland 667,015 people aged 15-24 (12.5%) 5,320,496 persons all ages

Queensland Treasury - <https://statistics.qgso.qld.gov.au/qld-regional-profiles>

*Queensland Regional Profiles*



## 2. Queensland Treasury - Queensland Regional Profiles – Report Type: Resident

Data we needed	Data Source	Data found for LGA	Data found for SA4/SA3/SA2	Data found for QLD
Demographic in community (young people 15-24 years)	<u>Queensland Regional Profiles</u>	Maranoa 1,568 people aged 15-24	Darling Downs – Maranoa (SA4) 14,326 people aged 15-24  Darling Downs (West) – Maranoa (SA3) 4,987 people aged 15-24  Darling Downs - East (SA3) 4,978 people aged 15-24  Granite Belt (SA3) 4,361 people aged 15-24  Roma (SA2) 1,007 people aged 15-24  Roma Surrounds (SA2) 561 people aged 15-24	Queensland 667,015 people aged 15-24

## 2. Queensland Treasury – Queensland Regional Profiles – Report Type: Resident

Data we needed	Data Source	Data found for LGA	Data found for SA4/SA3	Data found for QLD
Demographic in community (young people 15-24 years)	<u>Queensland Regional Profiles</u>	Maranoa 1,568 people aged 15-24 (12.0%) 13,100 persons all ages	Darling Downs – Maranoa (SA4) 14,326 people aged 15-24 (10.9%) 131,012 persons all ages Darling Downs (West) – Maranoa (SA3) 4,987 people aged 15-24 (11.1%) 44,963 persons all ages Darling Downs – East (SA3) 4,978 people aged 15-24 (11.4%) 43,702 persons all ages Granite Belt (SA3) 4,361 people aged 15-24 (10.3%) 42,347 persons all ages Roma (SA2) 1,007 people aged 15-24 (14.4%) 7,011 persons all ages Roma Surrounds (SA2) 561 people aged 15-24 (9.2%) 6,089 persons all ages	Queensland 667,015 people aged 15-24 (12.5%) 5,320,496 persons all ages

## 2. Queensland Treasury - Queensland Regional Profiles – Report Type: Indigenous

Data we needed	Data Source	Data found for LGA	Data found for SA4/SA3	Data found for QLD
Demographic in community (young people 15-24 years) – First Nations populations	<u>Queensland Regional Profiles</u>	Maranoa 191 people aged 15-24 (15.3%) 1,249 persons all ages	Darling Downs – Maranoa (SA4) 1,515 people aged 15-24 (16.4%) 9,247 persons all ages Darling Downs (West) – Maranoa (SA3) 665 people aged 15-24 (16.0%) 4,153 persons all ages Darling Downs – East (SA3) 493 people aged 15-24 (17.1%) 2,877 persons all ages Granite Belt (SA3) 358 people aged 15-24 (16.2%) 2,216 persons all ages Roma (SA2) 150 people aged 15-24 (17.9%) 839 persons all ages Roma Surrounds (SA2) 44 people aged 15-24 (10.7%) 412 persons all ages	Queensland 44,206 people aged 15-24 (18.6%) 237,303 persons all ages

1. Understand your geography
2. Understand the population (your denominator)
3. Understand what you want to measure (your numerator)
4. Summarising the data in a succinct way

## Roma

Learning  
or Earning

Labor force and  
Unemployment

Jobseeker and  
Youth Allowance

Industry labour  
market projections

15 to 24 yrs

15 to 24 yrs

15 to 24 yrs

15 to 24 yrs

Descriptive statistics, tables and charts +  
Local understandings and knowledge +  
Service level information

# Step 3: Understand what you want to measure

## Most Relevant Open Data Sources

Data Source	Link to open data	Data release frequency
1. Torrens University Australia	<a href="#"><u>PHIDU</u></a>	Ad hoc, as new data is released
2. Queensland Treasury	<a href="#"><u>Labour and Employment - Regional</u></a>	Monthly
3. Jobs and Skills Australia	<a href="#"><u>Small Area Labour Markets (SALM) estimates</u></a>	Quarterly
4. Department of Social Services	<a href="#"><u>JobSeeker Payment and Youth Allowance recipients</u></a>	Monthly
5. Department of Social Services	<a href="#"><u>DSS Payment Demographic Data</u></a>	Quarterly
6. Jobs Queensland	<a href="#"><u>Jobs Queensland Data portal &amp; explorer</u></a>	Annual?

## 1. Torrens University Australia - PHIDU

Data we needed	Data Source	Data found for LGA	Data found for SA4/SA3/SA2	Data found for QLD
The number of Young people engaged in “learning or earning” (school/other education or employed)	<u>PHIDU</u>	Maranoa 1,184 people aged 15-24	Darling Downs – Maranoa (SA4) 10,957 people aged 15-24 Darling Downs (West) – Maranoa (SA3) 3,782 people aged 15-24 Darling Downs - East (SA3) 3,832 people aged 15-24 Granite Belt (SA3) 3,340 people aged 15-24	Queensland 533,386 people aged 15-24
The proportion of Young people engaged in “learning or earning” (school/other education or employed)	<u>PHIDU</u>	Maranoa 78.8% Learning or Earning at ages 15-24	Darling Downs – Maranoa (SA4) 78.4% Learning or Earning at ages 15-24 Darling Downs (West) – Maranoa (SA3) 76.6% Learning or Earning at ages 15-24 Darling Downs - East (SA3) 78.6% Learning or Earning at ages 15-24 Granite Belt (SA3) 80.1% Learning or Earning at ages 15-24	Queensland 83.7% Learning or Earning at ages 15-24

Public Health Information Development Unit (PHIDU), Torrens University Australia - <https://phidu.torrens.edu.au/social-health-atlases/data>

*Local Government Areas*

Public Health Information Development Unit (PHIDU), Torrens University Australia - <https://phidu.torrens.edu.au/social-health-atlases/data>

*Population Health Areas*



## 1. Torrens University Australia - PHIDU

Data we needed	Data Source	Data found for LGA	Data found for SA4/SA3/SA2	Data found for QLD
The number of Young people engaged in “learning or earning” (school/other education or employed)	<u>PHIDU</u>	Maranoa 1,184 people aged 15-24	Darling Downs – Maranoa (SA4) 10,957 people aged 15-24 Darling Downs (West) – Maranoa (SA3) 3,782 people aged 15-24 Darling Downs - East (SA3) 3,832 people aged 15-24 Granite Belt (SA3) 3,340 people aged 15-24	Queensland 533,386 people aged 15-24
The proportion of Young people engaged in “learning or earning” (school/other education or employed)	<u>PHIDU</u>	Maranoa 78.8% Learning or Earning at ages 15-24	Darling Downs – Maranoa (SA4) 78.4% Learning or Earning at ages 15-24 Darling Downs (West) – Maranoa (SA3) 76.6% Learning or Earning at ages 15-24 Darling Downs - East (SA3) 78.6% Learning or Earning at ages 15-24 Granite Belt (SA3) 80.1% Learning or Earning at ages 15-24	Queensland 83.7% Learning or Earning at ages 15-24

## 2. Queensland Treasury - Labour and Employment - Regional

### 3. Jobs and Skills Australia - Small Area Labour Markets (SALM) estimates

Data we needed	Data Source	Data found for LGA	Data found for SA4/SA2	Data found for QLD
Unemployed Persons	Jobs and Skills Australia	Maranoa (LGA) 156 persons	Darling Downs - Maranoa (SA4) 1,600 persons Roma (SA2) 96 persons Roma Surrounds (SA2) 60 persons	Queensland 129,172 persons
Unemployment Rate (%)	Jobs and Skills Australia	Maranoa (LGA) 2.0% unemployment	Darling Downs - Maranoa (SA4) 2.4% unemployment 5.3% youth unemployment Roma (SA2) 2.3% unemployment Roma Surrounds (SA2) 1.7% unemployment	Queensland 4.1% unemployment 9.3% youth unemployment

Queensland Treasury -

<https://www.qgso.qld.gov.au/statistics/theme/economy/labour-employment/regional>

*Labour and Employment – SA4*

## 2. Queensland Treasury - Labour and Employment - Regional

Data we needed	Data Source	Data found for LGA	Data found for SA4/SA2	Data found for QLD
Unemployed Persons	Jobs and Skills Australia		Darling Downs – Maranoa (SA4) 1,600 persons	Queensland 129,172 persons
Unemployment Rate (%)	Jobs and Skills Australia		Darling Downs – Maranoa (SA4) 2.4% unemployment 5.3% youth unemployment	Queensland 4.1% unemployment 9.3% youth unemployment

Jobs and Skills Australia – <https://www.jobsandskills.gov.au/data/small-area-labour-markets#downloads>

*Labour and Employment – LGA and SA2*

## 3. Jobs and Skills Australia - Small Area Labour Markets (SALM) estimates

Data we needed	Data Source	Data found for LGA	Data found for SA4/SA2	Data found for QLD
Unemployed Persons	Jobs and Skills Australia	Maranoa (LGA) 156 persons	Darling Downs – Maranoa (SA4) 1,600 persons Roma (SA2) 96 persons Roma Surrounds (SA2) 60 persons	Queensland 129,172 persons
Unemployment Rate (%)	Jobs and Skills Australia	Maranoa (LGA) 2.0% unemployment	Darling Downs – Maranoa (SA4) 2.4% unemployment 5.3% youth unemployment Roma (SA2) 2.3% unemployment Roma Surrounds (SA2) 1.7% unemployment	Queensland 4.1% unemployment 9.3% youth unemployment

## 3. Department of Social Services- JobSeeker Payment and Youth Allowance recipients

## 4. Department of Social Services- DSS Payment Demographic Data

Data we needed	Data Source	Data found for LGA/SA2 (qtrly)	Data found for SA4/SA2 (monthly)	Data found for QLD (qtrly)
Youth Allowance (other)	Department of Social Services	Maranoa (LGA) 45 payment recipients Roma (SA2) 30 payment recipients Roma Surrounds (SA2) 15 payment recipients	Darling Downs – Maranoa (SA4) 635 payment recipients Roma (SA2) 25 payment recipients Roma Surrounds (SA2) 20 payment recipients	Queensland 20,510 payment recipients (qtrly)
JobSeeker	Department of Social Services	Maranoa (LGA) 380 payment recipients Roma (SA2) 255 payment recipients Roma Surrounds (SA2) 155 payment recipients	Darling Downs – Maranoa (SA4) 5,000 payment recipients Roma (SA2) 230 payment recipients Roma Surrounds (SA2) 155 payment recipients	Queensland 173,785 payment recipients (qtrly)

Department of Social Services - <https://data.gov.au/data/dataset/dss-payment-demographic-data>

*Quarterly data – LGA and SA2*



Department of Social Services -  
<https://data.gov.au/data/dataset/jobseeker-payment-and-youth-allowance-recipients-monthly-profile>

*Monthly data – SA2*

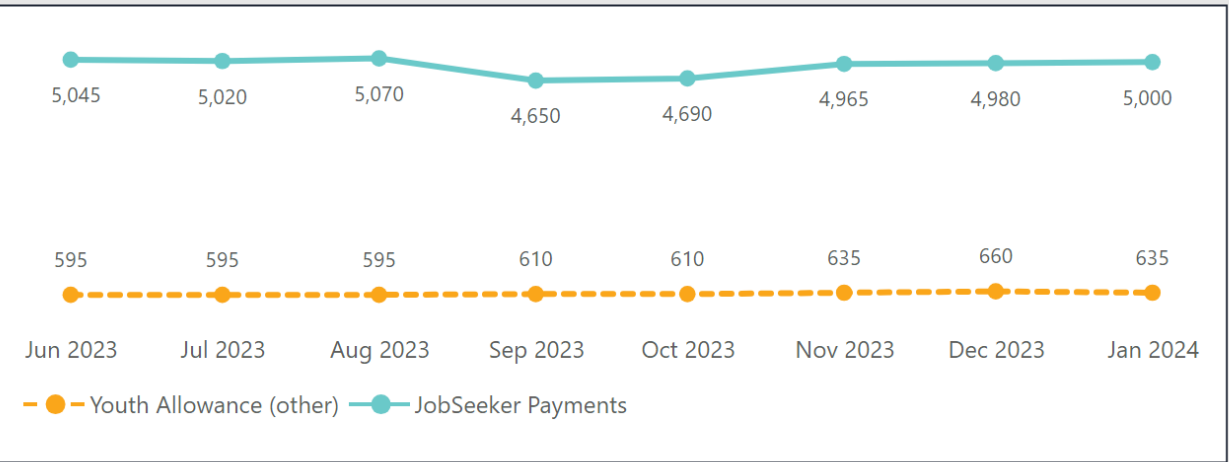
# JobSeeker and Youth Allowance Recipient Profile: SA4

Darling Downs - Maranoa

Jan-2024

SA4 Name	JobSeeker Payment Recipients
<b>Darling Downs - Maranoa</b>	<b>5,000</b>
<b>Darling Downs (West) - Maranoa</b>	<b>1,810</b>
Tara	490
Chinchilla	240
Roma	230
Balonne	190
Goondiwindi	190
Miles - Wandoan	170
Roma Surrounds	155
Inglewood - Waggamba	145
<b>Granite Belt</b>	<b>1,670</b>
<b>Darling Downs - East</b>	<b>1,520</b>
<b>Total</b>	<b>5,000</b>

SA4 Name	Youth Allowance (other) Recipients
<b>Darling Downs - Maranoa</b>	<b>635</b>
<b>Darling Downs (West) - Maranoa</b>	<b>230</b>
Tara	50
Chinchilla	45
Goondiwindi	35
Roma	25
Balonne	20
Miles - Wandoan	20
Roma Surrounds	20
Inglewood - Waggamba	15
<b>Darling Downs - East</b>	<b>220</b>
<b>Granite Belt</b>	<b>185</b>
<b>Total</b>	<b>635</b>



Source: Services Australia administrative data "JobSeeker Payment and Youth Allowance recipients – monthly profile", filtered by month. <https://data.gov.au/data/dataset/jobseeker-payment-and-youth-allowance-recipients-monthly-profile>. Recipients of JobSeeker Payment and Youth Allowance (other) who are determined to be current (including those entitled to be paid or in receipt of zero rate of payment) or suspended from payment on the Centrelink payment system. Statistical Areas based on the recipient's geo-coded address against the Australian Statistical Geography Standard (ASGS) 2021. Individuals who live overseas or who are without a valid address cannot be assigned to a locational boundary (including a Statistical Area Level 2 (SA2)). These numbers are represented as 'unknown'. State/territory totals derived from Statistical Area data will not match actual state and territory totals, due to different statistical geography methodologies. Note: To protect individuals' privacy, all cells including any totals and subtotals have been rounded to the nearest 5, values from 1 to 7 are rounded to 5. Zero cells are actual zeros. This may result in non-additivity for some totals. Caution should be taken in re-calculating totals from rounded data, as this may compound the effects of rounding.

## 3. Department of Social Services- JobSeeker Payment and Youth Allowance recipients

## 4. Department of Social Services- DSS Payment Demographic Data

Data we needed	Data Source	Data found for LGA/SA2 (qtrly)	Data found for SA4/SA2 (monthly)	Data found for QLD (qtrly)
Youth Allowance (other)	Department of Social Services	Maranoa (LGA) 45 payment recipients Roma (SA2) 30 payment recipients Roma Surrounds (SA2) 15 payment recipients	Darling Downs – Maranoa (SA4) 635 payment recipients Roma (SA2) 25 payment recipients Roma Surrounds (SA2) 20 payment recipients	Queensland 20,510 payment recipients (qtrly)
JobSeeker	Department of Social Services	Maranoa (LGA) 380 payment recipients Roma (SA2) 255 payment recipients Roma Surrounds (SA2) 155 payment recipients	Darling Downs – Maranoa (SA4) 5,000 payment recipients Roma (SA2) 230 payment recipients Roma Surrounds (SA2) 155 payment recipients	Queensland 173,785 payment recipients (qtrly)

# Example: Industry labour market projections

## 5. Jobs Queensland- Jobs Queensland Data portal & explorer

Note: Projection period: 2021-22 to 2025-26, baseline projection series

Data we needed	Data Source	Data found for LGA	Data found for SA4	Data found for QLD
Occupation Major category – Technicians and Trades Workers + Submajor category – Construction Trades Workers Industry Construction	Jobs Queensland	n/a	Darling Downs – Maranoa (SA4) Total Employment: 1,567 Employment Growth: 5.0% New Jobs: 74	Queensland Total Employment: 74,590 Employment Growth: 7.2% New Jobs: 5,032
Occupation All selections Industry Construction	Jobs Queensland	n/a	Darling Downs – Maranoa (SA4) Total Employment: 6,390 Employment Growth: 5.8% New Jobs: 352 % of Regional Workforce: 9.1%	Queensland Total Employment: 263,727 Employment Growth: 7.0% New Jobs: 17,151 % of Qld Workforce: 9.1%
Total people employed in the region, by 2024-25	Jobs Queensland	n/a	Darling Downs – Maranoa (SA4) Total People Employed: 70,207	Queensland Total People Employed: 2,913,422

<https://jobsqueensland.qld.gov.au/anticipating-future-skills/data-explorer/>

Region Profiles: <https://jobsqueensland.qld.gov.au/anticipating-future-skills/region-profiles/>

Notes on methodology: <https://jobsqueensland.qld.gov.au/anticipating-future-skills/behind-the-modelling/>

Jobs Queensland - <https://jobsqueensland.qld.gov.au/anticipating-future-skills/data-explorer/>

*Data Explorer*

Jobs Queensland - <https://jobsqueensland.qld.gov.au/anticipating-future-skills/region-profiles/>

*Region Profiles*

# Example: Industry labour market projections

## 5. Jobs Queensland- Jobs Queensland Data portal & explorer

Note: Projection period: 2021-22 to 2025-26, baseline projection series

Data we needed	Data Source	Data found for LGA	Data found for SA4	Data found for QLD
Occupation Major category – Technicians and Trades Workers + Submajor category – Construction Trades Workers Industry Construction	Jobs Queensland	n/a	Darling Downs – Maranoa (SA4) Total Employment: 1,567 Employment Growth: 5.0% New Jobs: 74	Queensland Total Employment: 74,590 Employment Growth: 7.2% New Jobs: 5,032
Occupation All selections Industry Construction	Jobs Queensland	n/a	Darling Downs – Maranoa (SA4) Total Employment: 6,390 Employment Growth: 5.8% New Jobs: 352 % of Regional Workforce: 9.1%	Queensland Total Employment: 263,727 Employment Growth: 7.0% New Jobs: 17,151 % of Qld Workforce: 9.1%
Total people employed in the region, by 2024-25	Jobs Queensland	n/a	Darling Downs – Maranoa (SA4) Total People Employed: 70,207	Queensland Total People Employed: 2,913,422

<https://jobsqueensland.qld.gov.au/anticipating-future-skills/data-explorer/>

Region Profiles: <https://jobsqueensland.qld.gov.au/anticipating-future-skills/region-profiles/>

Notes on methodology: <https://jobsqueensland.qld.gov.au/anticipating-future-skills/behind-the-modelling/>

# Darling Downs – Maranoa and Roma scenario data summary



Data we needed	Data Source	Data found for LGA	Data found for SA4	Data found for QLD
Demographic in community (young people 15-24 years)	Queensland Treasury	There are 1,568 young people aged 15-24 years living in the Maranoa (LGA), making up 12.0 percent of the region's population.	There are 14,326 young people aged 15-24 years living in the Darling Downs – Maranoa (SA4 region), making up 10.9 percent of the region's population.	There are 667,015 young people aged 15-24 years living in Queensland, making up 12.5 percent of the Queensland population.
Young people engaged in “learning or earning” (school/other education or employed)	<a href="#">PHIDU</a>	1,184 people aged 15-24 are engaged in “learning or earning”, 78.8% of the 15-24-year-old cohort.	10,957 people aged 15-24 are engaged in “learning or earning”, 78.4% of the 15-24-year-old cohort.	533,386 people aged 15-24 are engaged in “learning or earning”, 83.7% of the 15-24-year-old cohort.
Unemployment in the community	Queensland Treasury and Jobs and Skills Australia	There are 156 persons unemployed in the Maranoa (LGA) community. n/a – youth unemployment. The unemployment rate is 2.0%	There are 1,600 persons unemployed in the Darling Downs – Maranoa (SA4) community. 5.3% youth unemployment. The unemployment rate is 2.4%	There are 129,172 persons unemployed in Queensland. 9.3% youth unemployment. The unemployment rate is 4.1%
Jobseeker and Youth Allowance recipients in the community	DSS	There are 45 youth allowance payment recipients and 380 JobSeeker payment recipients (qtrly data)	There are 635 youth allowance payment recipients and 5,000 JobSeeker payment recipients (monthly data)	There are 20,510 youth allowance payment recipients and 173,785 JobSeeker payment recipients (qtrly data)
That there is work in the construction industry	Jobs Queensland	n/a	The construction industry is projected to grow by 5.8% to 2025-26, making up 9.1% of the regions total employment and creating 352 new jobs for the region.	The construction industry is projected to grow by 7.0% to 2025-26, making up 9.1% of the states total employment and creating 17,151 new jobs.



## Bonus data that helps us refine our project:

### Learning or Earning

- Basing the project in the Darling Downs (West) – Maranoa (SA3) region area may be of value, as there is a lower proportion of youth 15-24 Learning or Earning (76.6%).
- Go back into the ABS Map – what SA2s are in this area?
  - Roma
  - Roma Surrounds
  - Miles – Wandoan
  - Chinchilla
  - Tara
  - Inglewood – Waggamba
  - Goondiwindi
  - Balonne

### Unemployment

- There is large variation in unemployment within the Darling Downs (West) – Maranoa SA3 region, ranging from 8.7% unemployment in Tara (SA2) to 1.7% in Roma Surrounds (SA2).
- Could take the approach of numbers or %s of unemployed to inform project:
  - Tara (SA2) 151 persons, 8.7%
  - Balonne (SA2) 76 persons, 3.1%
  - Miles – Wandoan (SA2) 65 persons, 2.7%
  - Inglewood – Waggamba (SA2) 49 persons, 2.4%
  - Chinchilla (SA2) 112 persons, 2.3%
  - Roma (SA2) 96 persons, 2.3%
  - Goondiwindi (SA2) 82 persons, 2.3%
  - Roma Surrounds (SA2) 60 persons, 1.7%

Could also look at current vacancy rates by occupation and Monthly Labour Market Dashboards (available only by broad region – e.g. Darling Downs):

Vacancy Rates by Occupation - <https://www.jobsandskills.gov.au/work/internet-vacancy-index>

Labour Market Dashboards - <https://www.jobsandskills.gov.au/data/employment-region-dashboards-and-profiles/monthly-labour-market-dashboards>

1. Understand your geography
2. Understand the population (your denominator)
3. Understand what you want to measure (your numerator)
4. Summarising the data in a succinct way

## Roma

Learning  
or Earning

Labor force and  
Unemployment

Jobseeker and  
Youth Allowance

Industry labour  
market projections

15 to 24 yrs

15 to 24 yrs

15 to 24 yrs

15 to 24 yrs

Descriptive statistics, tables and charts +  
Local understandings and knowledge +  
Service level information

## Descriptive statistics - Darling Downs – Maranoa (SA4)

There are 14,326 young people aged 15–24 years living in the Darling Downs – Maranoa (SA4 region), making up 10.9 percent of the region's total population.

10,957 young people aged 15–24 are engaged in “learning or earning”, 78.4 percent of the 15–24 year old cohort.

However, this varies within the region, with 76.6 per cent of youth Learning or Earning in the Darling Downs (West) – Maranoa (SA3), compared to 80.1 percent in Granite Belt (SA3). All regions within Darling Downs – Maranoa have a lower percentage of youth Learning or Earning, compared to the state average (83.7 percent).

The unemployment rate in Darling Downs – Maranoa is less than the Queensland rate (2.4 percent compared to 4.1 per cent). There is large variation in unemployment within the Darling Downs (West) – Maranoa SA3 region, ranging from 8.7 percent unemployment in Tara (SA2) to 1.7 per cent in Roma Surrounds (SA2).

There is relatively low youth unemployment in the region, at 5.3 per cent (January 2024). Youth unemployment has decreased 6.0 percentage points, from 11.3 per cent in January 2023.

Additionally, there are 635 youth allowance payment recipients and 5,000 JobSeeker payment recipients in Darling Downs – Maranoa (SA4).

The construction industry in Darling Downs – Maranoa (SA4) is projected to grow by 5.8 percent to 2025–26, making up 9.1 percent of the regions total employment and creating 352 new jobs.

---

## How could you use this data when responding to Selection Criteria Two “Servicing community and industry needs”?

There is need in Darling Downs - Maranoa region for young people to be engaged in training and entry level jobs that will provide secure employment pathways in the years ahead. There are 14,326 young people aged 15-24 years in the Darling Downs - Maranoa region, making up 10.9 percent of the region's total population (Queensland Treasury, 2022). While 78.4 percent of these young people are either in employment or engaging in education (PHIDU, 2021), 635 young people in the region receive youth allowance (DSS, 2024), indicating their disengagement in both learning and the workforce. **Youth unemployment in this region has decreased from 11.3 percent in January 2023 to 6.0 percent in January 2024 (Queensland Treasury, 2023). For January 2024, the unemployment rate in Maranoa is lower than Queensland (2.4 percent compared to 4.1 percent).**

As (your org name) works closely with youth in the region, we are familiar with the needs of youth and the desire of many of them to undertake purposeful and practical work in the community. The construction industry in the Darling Downs - Maranoa region is projected to grow by 5.8 percent to 2025-26, making up 9.1 percent of the regions total employment and creating 352 new jobs (Jobs Queensland, 2024). We believe this industry to be a logical match for many of the young people we work with.

We will continue to work with (Org name) to connect with community role models who will provide the valuable mentorship needed to keep young people engaged in learning. (Org name) has provided a letter of support to indicate their commitment to hosting fortnightly morning teas for participants with guest speakers engage participants in conversations about job preparedness and industry knowledge. We have identified five local construction companies willing to provide work placement opportunities to our project participants, and have indicated their willingness to employ suitable trainees who gain their qualification through the project. Their letters of support are attached.

- 
- Identify local data where possible and available to do so
  - Compare data within your region
  - Look at similar regions, or surrounding regions - what is happening in their region?
  - Compare to QLD data to highlight community differences
  - Compare changes over time
  - Focus on the target cohort you want to work with
  - Understand the language and indicators on what you want to measure – access the source data dictionaries and notes
  - Use current data (and reference the date and the data source)
  - Use our list of suggested open data sources and update your application when new data becomes available
  - Don't fear data!



# Research and Evaluation Network

An opportunity for collaboration and knowledge sharing in data analysis, research and evaluation for the community services sector in Queensland.

- Learn more about focus topics
- Keep on top of sector issues
- Feel less isolated in your role
- Opportunity to network
- Develop partnerships

## Learn about:





















- Data visualization and storytelling
- Knowledge translation
- Measuring diverse outcomes
- Capturing community voice
- Evaluation resources and frameworks
- Communicating impact
- Qualitative research
- Systems evaluation and more!

## Hear from:

- Experts in Monitoring, Evaluation, Accountability and Learning
- Data leaders sharing lessons and insights from the community sector
- University researchers and change-makers



[research@qcross.org.au](mailto:research@qcross.org.au)

 <p><b>Using data to measure diverse program outcomes</b></p> <p>Community Care Integration Officer, Sue Baines, walks through Community's data systems and how they can be used to effectively measure diverse program outcomes.</p>	 <p><b>Community Services and university partnerships</b></p> <p>Guest speaker from UQ's School of Social Science research team outline how partnering with a university can benefit your organisation.</p>	 <p><b>Quantifying the community value of neighbourhood centres</b></p> <p>QCROSS and MetroBusiness Centre Queensland take on a logic and of the methodology of 'Social Return On Investment', and how data can be used to advocate for funding increases.</p>	 <p><b>Data access and collaboration</b></p> <p>The session explores how QICB Data &amp; Analytics can support the development of the Queensland Region Missing Data Hub - ensuring the community to include a range of community statistics measuring goals.</p>
 <p><b>The 3 steps of Systems Evaluation Theory</b></p> <p>Dr Ivel Anderson, Coosco Partner of Haines Castle Architects, provides a clear introduction to Systems Evaluation Theory (SET) and highlights parallels to Results Based Accountability (RBA).</p>	 <p><b>Human Research Ethics Committees and their role in the community sector</b></p> <p>Megan Gordon, Ombid Innovation, Research and Partnerships with Logic Institute, provides a clear introduction to how committees are best run in the community services sector.</p>	 <p><b>Data Governance in the Community Services Sector</b></p> <p>Guest speaker from Queensland Positive Peoples highlight their processes regarding creating of data and secure data management of confidential, personal and health information.</p>	 <p><b>Chat GPT and AI</b></p> <p>Guest speaker Professor Ross Stewart, Co-ordinator of the AIC Centre for Evidence, explores the implications of automatic decision making for the social service sector.</p>
 <p><b>NFP Digital Technologies: Key statistics and actions for your organisation</b></p> <p>Intelligence Analyst Harvey talks through key digital trends, opportunities and challenges arising in Queensland, Australia and Asia Pacific; and, shares what is already emerging in the social sector.</p>	 <p><b>Building a Data-Driven Culture: Key principles for Community Services leaders</b></p> <p>Dr Brian Knight explores some of the key principles for creating a data driven culture, including enhancing how people talk and think about data.</p>	 <p><b>Using data to strengthen your Skilling Queenslanders for Work funding application</b></p> <p>Increase your understanding of data evidence to you, and how to use it to inform your social project development and future writing.</p>	 <p><b>Data Presentation Best Practices: Mastering the Art of Visualising Information</b></p> <p>Data coaching Session one Dave Blye walks into the intricacies of data presentation and practices and data visualisation research.</p>
 <p><b>Data Storytelling Principles</b></p> <p>(Data coaching Session Two) Speakers focus on key data storytelling principles that not only practitioners can use to turn data into compelling narratives that inspire action and drive meaningful impact.</p>	 <p><b>Communicating Impact and Purpose with Data</b></p> <p>(Data coaching Session three) Hear from community organisations sharing innovative ways to communicate complex issues such as homelessness, poverty, and inequality.</p>	 <p><b>Introduction to Qualitative Research Methods</b></p> <p>We explore some of the key concepts and processes of qualitative enquiry and why it's important.</p>	 <p><b>Cross-cultural Evaluation and Accountability</b></p> <p>The session covers ways community organisations can be more accountable to themselves and clients for the work they do.</p>
 <p><b>Evaluating Collaboration and Partnerships</b></p> <p>Partnerships that bring together actors from across diverse sectors and settings, are important forms of collaboration; yet evaluating and learning about them is challenging. We explore the benefits.</p>	 <p><b>Digital technology in the NFP sector</b></p> <p>Intelligence Digital Transformation experts, Michael Harvey, Stephen Goussard and Rebecca McNamee, provide us to discuss not only digital trends, opportunities and challenges.</p>	 <p><b>Introduction to Social Network Analysis</b></p> <p>Neil Harvey provides a clear introduction to Social Network Analysis, what it is, and what we need it for to do it.</p>	 <p><b>Grant writing: planning your evaluation</b></p> <p>Practices tips to ensuring that you have an appropriate evaluation plan for the project you are seeking funding for.</p>

# QCROSS Research and Evaluation Resources Hub

<https://communitydoor.org.au/resources/research-and-evaluation>

# Research and Evaluation Network YouTube play list

[https://www.youtube.com/playlist?list=PLI\\_5shzVp2f-fX8evJvcPzD80sa-QcVvk6](https://www.youtube.com/playlist?list=PLI_5shzVp2f-fX8evJvcPzD80sa-QcVvk6)

# QCROSS Data Hub

<https://www.qcross.org.au/data/>



## Effective Surveys – Design and Methods

---

For many community sector organisations, surveys are an important way of informing service delivery design, client feedback, and evaluating their work. Surveys offer a mechanism for voices to be heard, and that's important in our sector.

In this meeting, Rose Ahearn will join us to talk about effective survey design and methods, and how creating surveys with intention can make all the difference to the data you can collect and impact you can measure.

Thursday 14<sup>th</sup> March, 9:30am-11:00am

Register via <https://www.qcoss.org.au/events/quality-collaboration-network-effective-surveys-design-and-methods/>



## Key Learnings on Outcome Measurement from the Sector

---



YFS is a dynamic and diverse community-based organisation. With more than 30 years of experience providing services in Logan, YFS wanted to be able to understand the difference it was making in the community and to identify areas for service improvement.

This webinar will share valuable insights of relevance to other organisations embarking on their own outcomes journey.

Monday 25<sup>th</sup> March, 10am-11am

Register via <https://www.qcoss.org.au/events/key-learnings-on-outcome-measurement-from-the-sector/>